



**USER MANUAL – EN**  
**IN 26582 Hot tube inSPORTline Voytano**



# CONTENTS

- SAFETY INSTRUCTIONS..... 3
- SPECIFICATIONS..... 5
- PARTS LIST ..... 6
- ASSEMBLY ..... 7
- FILLING ..... 8
- CONTROLS..... 10
- MAINTENANCE ..... 10
- WATER TREATMENT..... 11
- WATER TREATMENT PRODUCTS ..... 12
- CLEANING ..... 12
- STORAGE ..... 12
- TROUBLESHOOTING ..... 13
- HEATING..... 15
- REPAIR SET ..... 17
- FILTER CLEANING..... 17
- ENVIRONMENT PROTECTION ..... 18
- TERMS AND CONDITIONS OF WARRANTY, WARRANTY CLAIMS..... 18

SevenSport s.r.o. reserves the right to make any changes and improvements to its product without prior notice. Visit our website [www.insportline.eu](http://www.insportline.eu) where you will find the latest version of the manual.

## SAFETY INSTRUCTIONS

- Please read the manual before use and keep it for future reference.
- All notices, warnings and instructions related to safe movement around water cannot cover all situations and hazards that may occur. Always use common sense and always supervise children and wards.
- We recommend building barriers around the device to prevent unauthorized use.
- Any safety features (barriers, covers, alarm, etc.) cannot replace the adult supervision.
- We recommend placing rescue equipment around the device.
- Always have a phone with emergency numbers nearby.
- We recommend that all users be familiar with the basics of swimming.
- The person who was entrusted with the supervision should be able to provide first aid and perform resuscitation.
- All users should be informed how to behave in an emergency situation.
- Do not submerge below the surface of the water.
- Do not use under the influence of alcohol, medication, or drugs.
- If the device is covered by a cover, you must remove it before use.
- Regularly treat the water with appropriate means.
- Ladders and steps must be placed so that they cannot cause injury.
- The drained hot tub must be secured.
- Assembly and maintenance may only be performed by an adult.
- Follow all maintenance instructions.
- For home use only.
- For outdoor use only.
- Risk of drowning.
- If you do not plan to use the device for a long time, drain the water from it. Do not store outdoors.
- Failure to follow instructions and warnings may result in drowning, serious injury or electric shock.
- Children must be under the constant supervision of an adult or guardian.
- The number of persons responsible for supervision must be proportional to the number of users.
- Do not jump into or submerge in the hot tub.
- Do not run around the hot tub.
- Maintenance products must be stored out of the reach of children.



**WARNING:** Children must be supervised at all times.



WARNING: No diving.

- Prevent unauthorized use by children.
- Check regularly for damage, water leaks or wear. Never use damaged or worn safety features.
- Never use the hot tub if it is damaged, all parts must be replaced with original parts or suitable replacements.
- If the power cord is damaged, it must be replaced by a professional.
- There must not be any electrical devices within a distance of 1.5 m around the device.
- Do not use during rain or storm.
- To reduce the risk of electric shock, do not use extension cords or adapters. Always plug the hot tub into a safe outlet.
- The hot tub should be connected via a residual current device (RCD) whose rated residual operating current does not exceed 10 mA.
- All electronic devices must be located or secured so that they cannot fall into the hot tub.
- Any outlets should be at least 2m away from the hot tub.
- All electrical installations must meet safety standards.
- Not suitable for children under 8 years old.
- Persons with reduced mental or motor abilities, lack of knowledge and experience must be under the constant supervision of an adult.
- Children are not allowed to play in the hot tub.
- Children should not be around the hot tub during cleaning and maintenance.
- Make sure the bearing surface area is at least  $\geq 500 \text{ kg/m}^2$ .
- A drainage system must be created around the device.
- To avoid damage, do not leave the hot tub without water for an extended period of time.
- To avoid damage to the pump, it must not be run without water.
- If you feel nauseous or tired, leave the hot tub immediately.
- We recommend using lower temperatures for children or if continuous use exceeds 10 min (water temperature below 40 °C).
- A water temperature of up to 30 °C is suitable for pregnant women, or for women who might be pregnant.
- Before entering the hot tub, check the temperature of the water with a suitable thermometer.
- People suffering from obesity, heart disease, people with high or low blood pressure, circulatory disease or diabetes should consult their doctor for use.
- People taking medication should consult their doctor before using a hot tub.
- Persons suffering from an infectious disease should not use the hot tub.
- Water with a temperature higher than 40 °C can cause injury.
- We do not recommend using the hot tub alone or allowing another person to use it alone without supervision.
- Do not use after strenuous training or physical activity.
- Do not leave the hot tub in temperatures below 4°C.
- Do not turn on the hot tub if the water in it is frozen.

- Never pour water at a temperature of 40 °C and above directly into the hot tub.
- Before any maintenance, the hot tub must be disconnected from the electricity supply.
- Protect the power cord from damage.
- Never touch electrical parts with damp or wet hands.
- Do not use if the hot tub is damaged or not working properly.
- Keep away from animals.
- Do not add bath salts or oils.
- The device must not be connected to any timer or through an external device providing current.
- Don't dive in.
- Do not drink the hot tub water.
- A sudden change in temperature can cause dizziness or loss of consciousness.

## SPECIFICATIONS

Shape	Oval
Number of persons	2
Water volume	550 l
Voltage/ Frequency	AC 110-120 / 60Hz
Rated power	2400W
Outer dimensions	190x120 cm
Inner dimensions	150x80cm
Height	65 cm
Filter pump (AC 12V/50Hz)	1400 l/hod
Air pump (AC 220-240V/50Hz)	600 W
Heating (AC 220-240V/50Hz)	1200 W
Power cable	3.8 m H07RN-F 3*1.00 mm <sup>2</sup> with a plug equipped with a current protector
Temperature range	20°- 40°C
Number of air holes	100
Weight (filled, without users)	571 kg

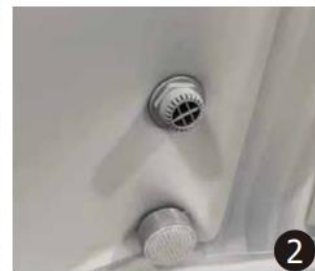
## PARTS LIST

	No.	Name	Qty.
	A	Storage bag	1
	B	Cover	1
	C	Filter	2
	D	Filter cover	2
	E	PVC repair kit	2
	F	Manual	1
	G	Inflatable hose	1
	H	One way valve	1
	I	Key	1
	J	Child safety lock	2
	K	Air valve	1
	L	Draining valve	1

1. This part serves as a prevention of bulging of the bottom.



2. The white dirt filter is fixed on the water inlet.



3. Before use, it is necessary to remove the black caps on the water inlet and outlet.



4. Two filters must be attached before filling and use. This prevents dirt from entering the circulation.



5. Garden hose adapter for easier draining of water. You can also fill the water with the adapter, but it is necessary to remove the drain cap inside the hot tub. After filling, it is necessary to cover the valve again with a cap.



6. After the hot tub is inflated, check the pressure with a barometer. Attach it to the gray valve. The pressure should not exceed the green limit. The value is visible only if the bubble massage function is switched off and the inflatable hose must not be connected.



## ASSEMBLY

Warning: Do not leave the hot tub outside if the temperature is below 4°C.

If the ambient temperature is lower than 10°C, we recommend leaving the hot tub in a room where the temperature will be higher than 15°C for 2 hours before assembly.

1. Unpack the hot tub in a place where the ambient temperature is at least 15°C.

Unfold all parts and make sure the package is complete.

Lay out the hot tub on a clean, firm and flat surface with no sharp edges.

2. Unscrew the air valve cover and connect the inflation hose.
3. Screw the one-way valve into the hot tub and unscrew the valve cover on the top. Screw the air hose into the one-way valve. (the valve with the black cover is for air intake).



4. The hoses should be connected as shown.
5. Plug in the power supply. A red light will come on. If the yellow button is lit, the power is off, and you need to turn it on with the red button.
6. Press the "air massage (bubbles)" function. The hot tub starts to inflate, the inflation time is 8-10 min. The hot tub should be firm, but not completely hard, the top edge should be pressed by palm 4-5 cm inside. After inflating, press the red button to deflate.
7. Then disconnect the air hose and tighten the valve covers. Then replace the air outlet valve.



Air intake (black valve) - screw on the valve cover

Air outlet (grey) - screw on the valve



## FILLING

Before filling with water, make sure:

That the power cord is outside of the hot tub and not plugged into an electrical outlet.

Check that all valves and caps are properly connected and tightened.

Make sure the rubber plug on the bottom is properly attached.





Make sure the outlet hose is properly attached.



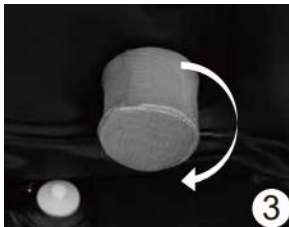
3. Attach the filter clockwise. Do not overtighten. Then put the cover on the filter. The cover serves as protection against particles that could quickly dirty the filter and reduce its efficiency.

4. Attach the rubber plug to the bottom, make sure it seals properly.

5. Fill with water between the min and max marks, do not overfill the hot tub with water, the level will rise after people enter the hot tub.

**Warning:** Do not use rain, surface or salt water. These waters contain impurities that can settle on the bottom and in the filter and thus reduce the life of the hot tub.

6. Once you have filled the water, turn on the heater.



#### Notes:

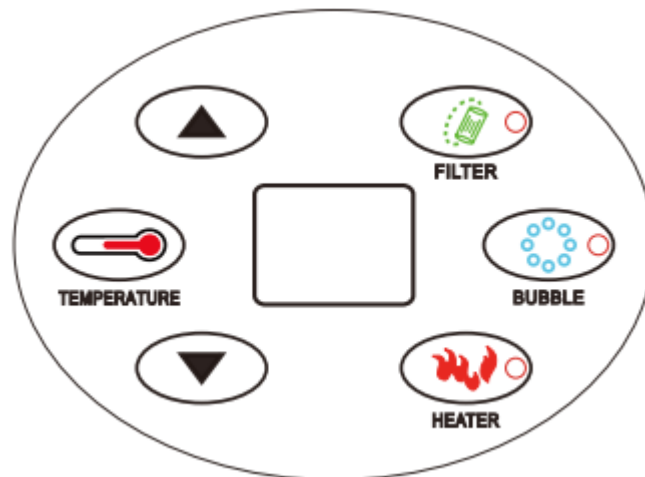
- To speed up the heating of the water, place the hot tub cover.
- When the hot tub is not in use, we recommend locking the cover.
- The filter serves to remove impurities from the water.
- To drain the water, you need to remove the rubber plug from the inside and open the valve from the outside.
- To deflate the hot tub, you need to unscrew the air intake valve cover (black)
- To inflate a hot tub that is filled with water, you must follow these steps:
- Press the "bubbles" function and wait 4-5 min.
- Open the air outlet valve and connect the air hose.
- Open the air intake valve (black) and connect the air hose.
- Press the "bubbles" function on the control panel.

**WARNING:** The hot tub should be inflated so that the top edge can be pressed in 4-5 cm with the palm of the hand.

**Note:** Inflated air may expand due to heat. This can cause the air in the hot tub to warp and expand. In order to prevent damage to the PVC, we recommend blowing the hot tub to 90-95% of maximum capacity at temperatures of 25°C and above.

**Note:** Environmental influences may result in gradual deflation of the hot tub and do not indicate damage.

## CONTROLS



**Filter:** Press to start the filter system. As soon as the red indicator light comes on, the filtration is active. If you want to turn off the filtration, press the button again, the red indicator light will turn off. After 168 hours of filtration, the display will show "FC". The filtration will continue to work, the indicator light will flash. The filter needs to be cleaned or replaced. Hold down the filter button to turn off notifications.

**Heater:** Press the button to start the heater. As soon as the red indicator light comes on, the heating is active. Press again to turn off the heater, the indicator light will turn off.

As soon as you start the heating, the filtration is also turned on. As soon as the water reaches the set temperature, the heating will turn off, but the filtration will continue to work. If the water temperature drops by 2°C from the set temperature, heating starts automatically.

**Warning:** Never use heating and filtration unless the hot tub is filled with water.

**Temperature:** Press the button to set the water temperature. As soon as you press the button, the temperature starts flashing on the display. Use the arrows to adjust the value. Once you have selected the desired temperature, press the temperature button again. A water temperature of 37°C is recommended for a healthy adult. Depending on the ambient temperature, the hot tub heats the water by 1°C - 1.5°C per hour.

**Bubble:** Press the button to start "inflating / bubbles". The red diode lights up. Press again to turn off the function and the diode will turn off. The bubbles automatically turn off after 20 minutes of continuous operation. Automatic shutdown serves as protection against overheating of the pump. The function can be turned on after 10 min.

**FP mode:** Press the "temperature" button and use the arrow to set the value to FP mode. This function serves as protection against water freezing. If the water temperature drops below 5°C, the heating automatically turns on and maintains the water temperature above 5°C.

To turn off the FP mode function, press the up arrow, the display will show a water temperature of 20°C and the spa will be in normal operation again.

**Warning:** do not use the FP mode function if the water temperature is below 0°C or frozen.

**Warning:** during FP mode, the filter is constantly in operation. Check the condition of the filter regularly.

## MAINTENANCE

Use one of the following methods to drain the water:

### Method 1

- Turn off the power.
- Place the external water drain pump in the water and pump out the water.

- Do not plug in the hot tub unless it is filled with water.

## **Method 2**

- Turn off the power.
- Unscrew the cap from the water drain valve and connect the hose.
- Remove the rubber stopper from the hot tub. The water will begin to drain.
- Once there is no water in the hot tub, press the "bubble" button and let it run for 2-3 minutes to drain the remaining water.
- After draining, unscrew the hose and close both outlets.

## **Warning:**

Drained water contains traces of chemicals that can negatively affect the environment. If you are not sure where you can drain the water, check with your local authorities. If you are going to fold the hot tub after emptying it, make sure there is no residual moisture or water in it.

## **Filter**

Check the condition of the filter regularly after each use. We recommend changing the filter every week or according to the frequency of use. Also check the condition of the filter if the hot tub has not been in use for a long time. We recommend having 2-3 extra filters.

**Important:** In some cases, water treatment chemicals can damage the filter. We therefore recommend cleaning the filter regularly or removing the filter if you are not going to use the hot tub for a long time.

## **Filter replacement**

- Make sure the hot tub is unplugged.
- Unscrew the filter cover counterclockwise.
- Remove the filter from the housing.
- Place the filter with the cover back into the hot tub and screw it clockwise.

## **Filter cleaning**

- If the filter is not damaged, it can be cleaned as follows:
- In the dishwasher on a fast program, using normal detergents.
- In the washing machine on a quick program using normal detergents.
- Using anti-limescale agents.
- Place the filter in a washing bag.

## **WATER TREATMENT**

- For safe use and a longer service lifespan of all components, it is necessary to properly treat the water.
- For water testing, we recommend using sets designed for water testing, the values for:
- Active chlorine, active oxygen, bromine, pH, water hardness and total alkalinity
- Treat the water with suitable means.
- If the hot tub is used frequently, it is necessary to change the water regularly at least every 2 months. Change the frequency of water according to the frequency of use.

**Warning:** If the pH of the water and the chlorine content are different than the recommended values, you can reduce the lifespan of the product.

**Warning:** Do not use perfume or other oils. You can irreparably damage the hot tub components.

	<b>Min. value</b>	<b>Recommended</b>	<b>Max. value</b>
Active chlorine	2 ppm	2- 4 ppm	5 ppm
pH	7	7,5 – 7,6	7,8
Total alkalinity	60 ppm	80 ppm	120 ppm
Water hardness (CaCo3)	100 ppm	150 – 250 ppm	350 ppm
Active oxygen	5 mg/l	6 – 7 mg/l	8 mg/l
Bromine	3 mg/l	3,5 – 4,5 mg/l	5 mg/l

## WATER TREATMENT PRODUCTS

- Always apply the products in the middle of the hot tub. The bubble feature should be enabled for optimal distribution of all resources. Store water treatment products according to the manufacturer's recommendations and out of the reach of children.
- We recommend using a dosing float (version for hot tubs). This will prevent the PVC from fading or warping.
- **Important:** Remove the dosing float if you are going to use the hot tub.
- **Important:** If you are treating water, it is advisable to turn on the bubble function so that the agents are spread better.

**Warning:** If the pH of the water and the chlorine are outside the recommended values, you can reduce the lifespan of the hot tub.

**Warning:** Do not add any agents to the water if there are other people in it.

**Warning:** Concentrated chlorine can damage the hot tub. The seller is not responsible for the use of incorrect products.

**Warning:** If the water is dirty, it is better to change it. Using excessive amounts of chemicals can damage the hot tub.

**Warning:** Never throw tablets directly into water. Make sure the tablets are dissolved.

**Warning:** Never mix different types of chemicals. Always make sure the agents are properly dissolved before adding more.

**Warning:** Never use oils.

## CLEANING

Clean the hot tub using soap, water, a cloth and a soft brush. Never use solvents or aggressive cleaning agents for cleaning. Do not use hard brushes.

## STORAGE

- Drain the water from the hot tub. Drain the water using the instructions above. Activate the "bubble" function to drain residual water.
- Disconnect from the power supply.
- Remove the filter.
- Clean the hot tub and accessories. Make sure the hot tub is properly dried before deflating.
- Bleed the air from the hot tub. Unscrew the grey valve from the bottom of the hot tub.
- Fold the hot tub slowly. Be careful of sharp edges.
- Store the hot tub in a dry and warm place.

- We recommend storing the hot tub in its original packaging.

**Warning:**

- PVC can become brittle if exposed to temperatures below 0°C.
- Storage in sub-zero temperatures can damage the hot tub.
- If you use any antifreeze, you lose the right to warranty claim.

## TROUBLESHOOTING

Error	Cause	Solution
The display does not respond or does not start	The safety lock is off	Restart
	The water temperature is above 47°C	Wait until the water temperature is below 40°C and restart manually
The air vents are not working	Air motor overheating	Allow the engine to cool
	Engine error	Unplug, wait 10 min and then plug in again
The massage outlets are not working	Air motor overheating	Allow the engine to cool
	Engine error	Unplug, wait 10 min and then plug in again
The heating does not work	The heating is set to a low temperature	Set a higher temperature (from 20°C to 40°C)
	The water is within the set temperature tolerance	Once the water is heated to a given temperature, the heater will turn off and not start if the water temperature is within a 2°C tolerance
	The hot tube is not covered	If you want to heat up the hot tube faster before use, fasten the top cover
	The filter is dirty	Replace the filter
	Low water level	Add water
	Engine error	Unplug, wait 10 min and then plug in again
	The engine is clogged with dirt	Remove the filter and rinse the engine with water
Filtering is not working	The filter is dirty	Replace the filter
	Low water level	Add water
	Engine error	Unplug, wait 10 min and then plug in again
The filter pump has a loud operation	The filter is dirty	Replace the filter
	Low water level	Add water
	Dirty filter cover	Clean the cover
Faulty filter, air and heating units	Bad voltage/current	Contact an electrician
	Low water level	Add water
	Damage to the filter, air and	Unplug, wait 10 min and then

	heating units	plug in again
The deformed shape of the hot tub	Bad air pressure	Check the pressure in the hot tub with the barometer, the readings must be in the green part
The hot tub is losing pressure	The air valve is enabled	Check for air leaks using soapy water
	Tear or damage	Check for air leaks using soapy water
	Sudden change in ambient temperature	A common phenomenon if the ambient temperature changes suddenly
The hot tub is losing water	The rubber plug is not seated properly	Insert the plug correctly
	The hot tub is broken	If the damage is minor, use the repair kit to repair
The water is polluted	Low filtration time	Increase the filtration time
	The filter is dirty	Replace the filter
	Poor water treatment	Treat the water using the product manufacturer's instructions

#### ERROR CODES

Code	Cause	Solution
SL	The water temperature is below 5°C	Heat the water above 5°C or add warm water
SH	Temperature sensor control board error. Heating element overheating. Restart	Unplug and wait 30 min. Plug and run again
		Replace the display or motor
		Check the water level
HL	Filter pump error	Check the water level
FC (with sound signal)	Filtration exceeded 168 hours of operation. Before changing the filter, no functions (heating, filtration, bubbles) must be started	Replace the filter
OC	Temperature sensor error	Replace the temperature sensor
FP	Operation in winterization mode	Increase the heating temperature

- If you are not sure, always contact the service department or your dealer.
- If water leaks, check that the rubber plug and drain valve are properly tightened.
- If air leaks, check that both air valves are properly tightened.

## HEATING



Every time you use the hot tub after it has been switched off, the temperature must be set again, otherwise it will only heat up to 37.7°C. For faster heating, it is advisable to cover the hot tub. If you have an insulating mat under the hot tub, you will help the heat to escape more slowly.

1. if you use the bubble function, the heat escapes faster.

2. After 20 minutes of continuous operation, the bubble function will turn off and start after 10 minutes. Long-term continuous operation can significantly reduce the service lifespan.

Long-term operation may result in slight air leakage. If this happens, it is necessary to inflate the hot tub.

If there is no water in the hot tub, do not start the heating and filtration. You can damage the pump.

Use the supplied bag for assembly.

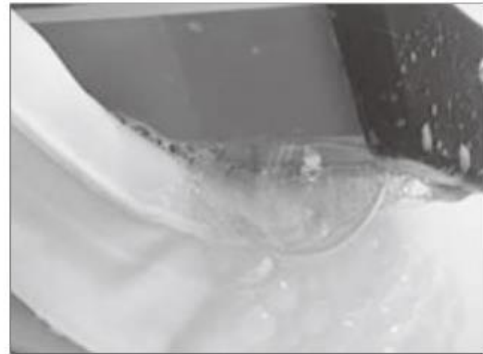


### Air loss

Inflatable hot tubs can naturally lose pressure, especially if the ambient temperature changes frequently. Loss of inflation pressure does not necessarily mean damage.

Check the tightness of all air valves (black / grey). After inflation, check the tightness of all valves.

If air is still leaking, apply soapy water over the entire PVC surface. Bubbles will form at the point of leakage.



#### **Other causes:**

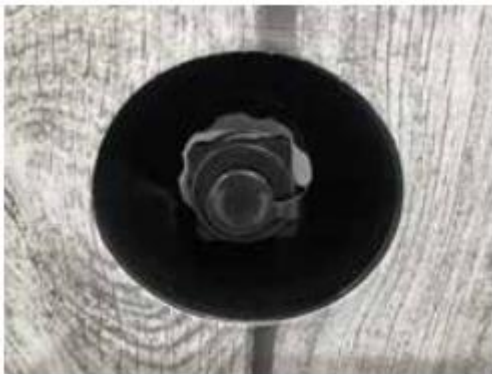
##### **Air leak**

The hot tub was moved away from the inflation point; you could have damaged the PVC body by moving it.

The surface is not flat and stable.

The hot tub was over inflated. The top edge of the hot tub should be inflated so that you can press the top edge 4-5 cm with your palm.

Over-inflation can cause deformation, especially if the ambient temperature is high.



##### **Water leak**

- Check all valves, if necessary, tighten using the supplied tools. Check the attachment of all hoses outside the hot tub.



##### **The filtration system is loud**

- The noise of the filter system is less than 85dB. Increased noise may be caused by insufficient water flow or pump.
- Check the water level. Check the minimum and maximum permitted level limits.
- Unscrew the filter cover and the filter. Check the volume of the pump without filter.
- Replace or clean the filter.



## Filtering is not working

- If you feel that the filtering is not working, follow the steps:
- Check the filtration indicator light.
- Check the condition of the filter, clean or replace if excessively dirty.
- Check the water flow. Unscrew the filter and place your palm in front of the filter hole. If you do not feel water flowing, check the pump filter or replace it.

## Heating

- The heating may not be sufficient if: the water flow is weak or the filter is dirty, the sensor cannot evaluate the correct temperature.
- Check the correct water level.
- Clean or replace the filter.
- The water temperature is set incorrectly, or the heating is not switched on.
- Press the "temperature" button and use the arrows to set the desired temperature, then press "temperature" to confirm the value. As soon as the temperature reaches the set value, the heating switches off. Heating does not start if the temperature is within 2°C of the set temperature.
- If the ambient temperature is low, it may take 12 to 24 hours to warm up.
- If the ambient temperature is below 10°C, heating will be slower. In such cases, we recommend using the hot tub in indoor spaces that are adapted for the use of the hot tub.
- Winter mode: If the water temperature is below 4°C, we do not recommend turning on any other functions. The winterization mode will keep the water temperature around 5°C.

## REPAIR SET

- Minor damage can be repaired with a repair kit.
- Find the damaged area. Drain the hot tub, dry and clean. Then let the air out of the hot tub.
- Clean the desired area properly.
- Cut out a large enough patch in a round shape.
- Apply the adhesive to the patch and around the damaged area. (We recommend using two-component glue, they are not included in the package).
- Place the patch in the desired location and press firmly. Allow the glue to dry for 12 hours. Then apply a layer of glue around the edges and let it dry (approx. 4 hours).

## FILTER CLEANING

- Disconnect from the power supply.
- Unscrew the filter cover and remove the filter.
- After each use, we recommend removing the filter and rinsing it under running water. If the filter is damaged, it must be replaced.
- Check the filter cover regularly. Replace it if necessary.



## ENVIRONMENT PROTECTION

After the product lifespan expired or if the possible repairing is uneconomic, dispose it according to the local laws and environmentally friendly in the nearest scrapyards.

By proper disposal you will protect the environment and natural sources. Moreover, you can help protect human health. If you are not sure in correct disposing, ask local authorities to avoid law violation or sanctions.

Don't put the batteries among house waste but hand them in to the recycling place.

## TERMS AND CONDITIONS OF WARRANTY, WARRANTY CLAIMS

### General Conditions of Warranty and Definition of Terms

All Warranty Conditions stated here under determine Warranty Coverage and Warranty Claim Procedure. Conditions of Warranty and Warranty Claims are governed by Act No. 89/2012 Coll. Civil Code, and Act No. 634/1992 Coll., Consumer Protection, as amended, also in cases that are not specified by these Warranty rules.

The seller is SEVEN SPORT s.r.o. with its registered office in Strakonická street 1151/2c, Prague 150 00, Company Registration Number: 26847264, registered in the Trade Register at Regional Court in Prague, Section C, Insert No. 116888.

According to valid legal regulations it depends whether the Buyer is the End Customer or not.

"The Buyer who is the End Customer" or simply the "End Customer" is the legal entity that does not conclude and execute the Contract in order to run or promote his own trade or business activities.

"The Buyer who is not the End Customer" is a Businessman that buys Goods or uses services for the purpose of using the Goods or services for his own business activities. The Buyer conforms to the General Purchase Agreement and business conditions.

These Conditions of Warranty and Warranty Claims are an integral part of every Purchase Agreement made between the Seller and the Buyer. All Warranty Conditions are valid and binding, unless otherwise specified in the Purchase Agreement, in the Amendment to this Contract or in another written agreement.

### Warranty Conditions

#### Warranty Period

The Seller provides the Buyer a 24 months Warranty for Goods Quality, unless otherwise specified in the Certificate of Warranty, Invoice, Bill of Delivery or other documents related to the Goods. The legal warranty period provided to the Consumer is not affected.

By the Warranty for Goods Quality, the Seller guarantees that the delivered Goods shall be, for a certain period of time, suitable for regular or contracted use, and that the Goods shall maintain its regular or contracted features.

#### The Warranty does not cover defects resulting from (if applicable):

- User's fault, i.e. product damage caused by unqualified repair work, improper assembly, insufficient insertion of seat post into frame, insufficient tightening of pedals and cranks
- Improper maintenance
- Mechanical damages
- Regular use (e.g. wearing out of rubber and plastic parts etc.)
- Unavoidable event, natural disaster
- Adjustments made by unqualified person
- Improper maintenance, improper placement, damages caused by low or high temperature, water, inappropriate pressure, shocks, intentional changes in design or construction etc.

### Warranty Claim Procedure

The Buyer is obliged to check the Goods delivered by the Seller immediately after taking the responsibility for the Goods and its damages, i.e. immediately after its delivery. The Buyer must check the Goods so that he discovers all the defects that can be discovered by such check.

When making a Warranty Claim the Buyer is obliged, on request of the Seller, to prove the purchase and validity of the claim by the Invoice or Bill of Delivery that includes the product's serial number, or eventually by the documents without the serial number. If the Buyer does not prove the validity of the Warranty Claim by these documents, the Seller has the right to reject the Warranty Claim.

If the Buyer gives notice of a defect that is not covered by the Warranty (e.g. in the case that the Warranty Conditions were not fulfilled or in the case of reporting the defect by mistake etc.), the Seller is eligible to require a compensation for all the costs arising from the repair. The cost shall be calculated according to the valid price list of services and transport costs.

If the Seller finds out (by testing) that the product is not damaged, the Warranty Claim is not accepted. The Seller reserves the right to claim a compensation for costs arising from the false Warranty Claim.

In case the Buyer makes a claim about the Goods that is legally covered by the Warranty provided by the Seller, the Seller shall fix the reported defects by means of repair or by the exchange of the damaged part or product for a new one. Based on the agreement of the Buyer, the Seller has the right to exchange the defected Goods for a fully compatible Goods of the same or better technical characteristics. The Seller is entitled to choose the form of the Warranty Claim Procedures described in this paragraph.

The Seller shall settle the Warranty Claim within 30 days after the delivery of the defective Goods, unless a longer period has been agreed upon. The day when the repaired or exchanged Goods is handed over to the Buyer is considered to be the day of the Warranty Claim settlement. When the Seller is not able to settle the Warranty Claim within the agreed period due to the specific nature of the Goods defect, he and the Buyer shall make an agreement about an alternative solution. In case such agreement is not made, the Seller is obliged to provide the Buyer with a financial compensation in the form of a refund.

**CZ**  
**SEVEN SPORT s.r.o.**

Registered Office: Strakonická 1151/2c, Praha 5, 150 00,  
ČR

Headquarters: Dělnická 957, Vítkov, 749 01  
Warranty & Service: Čermenská 486, Vítkov 749 01

CRN: 26847264  
VAT ID: CZ26847264

Phone: +420 556 300 970  
E-mail: eshop@insportline.cz  
reklamace@insportline.cz  
servis@insportline.cz

Web: www.inSPORTline.cz

**SK**  
**inSPORTline s.r.o.**

Headquarters, warranty & service center: Električná 6471,  
Trenčín 911 01, SK

CRN: 36311723  
VAT ID: SK2020177082

Phone: +421(0)326 526 701  
E-mail: objednavky@insportline.sk  
reklamacie@insportline.sk  
servis@insportline.sk

Web: www.inSPORTline.sk

**About shipping**

